

D

DIRECT EXPANSION AIR HANDLING UNIT SCHEDULE

PLAN MARK	TOTAL CFM	OUTSIDE AIR CFM	OUTSIDE AIR DUCT	FAN DATA:			COOLING COIL DATA:			HEATING (ELECTRIC) DATA:			UNIT (ELECTRIC) DATA:			MANUFACTURERS
				EXT. S.P. INCHES W.C.	HP	FLA	ELECTRIC SERVICE	TOTAL NET MBH	NET SENSIBLE MBH	TOTAL BTUH	KW	NUMBER OF STAGES	MINIMUM CIRCUIT AMPACITY	MAX FUSE SIZE	ELECTRIC SERVICE	
AHU-1	2,000	200	10"ø	0.5"	3/4	6.0	208/1ø/60	60	45	43,200	13.5	2	54.1	60	208/3ø/60	CARRIER FJ5 OR APPROVED EQUAL
AHU-2	1,400	200	8"ø	0.5"	1/2	6.0	208/1ø/60	42	32	38,600	13.5	2	46.1	50	208/3ø/60	CARRIER FJ5 OR APPROVED EQUAL
AHU-3	1,200	120	8"ø	0.5"	1/2	4.2	208/1ø/60	36	28	30,717	9.0	2	32	35	208/3ø/60	CARRIER FJ5 OR APPROVED EQUAL
AHU-4	1,600	160	8"ø	0.5"	3/4	6.0	208/1ø/60	48	36	38,600	11.3	2	46.1	50	208/3ø/60	CARRIER FJ5 OR APPROVED EQUAL
AHU-5	2,000	200	10"ø	0.5"	3/4	6.0	208/1ø/60	60	45	43,200	13.5	2	54.1	60	208/3ø/60	CARRIER FJ5 OR APPROVED EQUAL
1. EXTERNAL STATIC PRESSURE LOSSES DO NOT INCLUDE LOSS FOR DIRTY FILTERS. 2. ELECTRICAL SHALL PROVIDE DISCONNECT FOR UNIT. 3. UNIT SHALL HAVE SINGLE POINT ELECTRICAL CONNECTION. 4. CABINET SHALL BE INSULATED.																

CONDENSING UNIT SCHEDULE

PLAN MARK	TONS OF REFR.	COMPRESSOR MOTOR DATA:					CONDENSER DATA:				ELECTRICAL DATA:			MANUFACTURERS
		NO. REQ'D	TYPE REFR.	SUCT. TEMP.	TOTAL MBH	RLA	AMBIENT TEMP.	NO. OF FANS	FAN HP	FLA	ELECTRIC SERVICE	MCA	MAX FUSE	
CU-1	5.0	1	R-454B	47°	60.0	7.8	95°	1	1/4	0.7	480/3ø/60	10.5	15	CARRIER 24ABB OR APPROVED EQUAL
CU-2	3.5	1	R-454B	47°	42.0	6.0	95°	1	1/5	0.6	480/3ø/60	8.1	15	CARRIER 24ABB OR APPROVED EQUAL
CU-3	3.0	1	R-454B	47°	48.0	5.6	95°	1	1/5	0.7	480/3ø/60	7.7	15	CARRIER 24ABB OR APPROVED EQUAL
CU-4	4.0	1	R-454B	47°	48.0	6.1	95°	1	1/5	0.7	480/3ø/60	8.3	15	CARRIER 24ABB OR APPROVED EQUAL
CU-5	5.0	1	R-454B	47°	60.0	7.8	95°	1	1/4	0.7	480/3ø/60	10.5	15	CARRIER 24ABB OR APPROVED EQUAL
1. LOW AMBIENT TO 10°F. 2. UNIT MUST BE EQUIPPED WITH SCROLL COMPRESSOR. 3. ALL CONDENSING UNITS SHALL BE A MINIMUM OF 13 SEER. 4. UNIT SHALL HAVE SINGLE POINT ELECTRICAL CONNECTION. 5. REFRIGERANT LINES SHALL BE SIZED ACCORDING TO MANUFACTURERS' RECOMMENDATIONS. 6. UNIT SHALL HAVE FAN GUARD.														

C

MINI SPLIT AIR HANDLERS (AH)

PLAN MARK	TYPE	CONNECTED OUTDOOR UNIT	TOTAL CFM (HIGH)	FAN DATA:		COOLING DATA:				HEATING DATA:				ELECTRICAL SERVICE	MCA	MAX FUSE	MANUFACTURERS			
				WATTS	FLA	TOTAL BTUH	SENSIBLE BTUH	INDOOR		OUTDOOR	TOTAL BTUH	INDOOR						OUTDOOR		
								DB	WB			DB	WB						DB	WB
MSAHU-1,2	WALL	MSCU-1,2	473	29	.10	12,000	--	80°F	67°F	95°F	75°F	13,500	70	60	17	15	208/1ø/60	--	--	DAIKIN FTXF12AXXJU OR APPROVED EQUAL
<div>1. EXTERNAL STATIC PRESSURE LOSSES DO NOT INCLUDE LOSS FOR DIRTY FILTER.</div> <div>2. ELECTRICAL SHALL PROVIDE DISCONNECT FOR UNIT.</div> <div>3. REFRIGERANT LINES MUST BE SIZED STRICTLY TO MANUFACTURER'S RECOMMENDATIONS.</div> <div>4. UNIT SHALL COME EQUIPPED WITH CONDENSATE DRAIN PUMP.</div> <div>5. ROUTE CONDENSATE DRAIN TO NEAREST PLUMBING VENT OR HUB DRAIN, MAINTAIN 1" AIR GAP AT TERMINATION POINT.</div>																				

MINI SPLIT CONDENSING UNIT (MSCU)

PLAN MARK	CONNECTED INDOOR UNIT	COOLING BTUH	HEATING BTUH	COMPRESSOR RLA	CONDENSER FAN		ELECTRICAL SERVICE	MCA	MAX FUSE	MANUFACTURERS
					WATT	FLA				
MSCU-1,2	MSAHU-1,2	12,000	13,500	7.75	46	.61	208-230/1ø/60	7.95	15	DAIKIN RKF12AXVJU OR APPROVED EQUAL
1. LOW AMBIENT TO 30°F. 2. UNIT SHALL HAVE INVERTER COMPRESSOR. 3. UNIT SHALL HAVE SINGLE POINT ELECTRICAL CONNECTION. 4. REFRIGERANT LINES MUST BE SIZED STRICTLY TO MANUFACTURER'S RECOMMENDATIONS. 5. UNIT SHALL BE A MINIMUM OF 18 SEER. 6. UNIT SHALL HAVE FAN GUARD.										

B

FAN SCHEDULE

PLAN MARK	SERVICE AREA	TYPE	TOTAL CFM	S.P. LOSS IN W.C.	HP/W	FAN RPM	DRIVE TYPE	INLET SONES	FLA	ELECTRIC SERVICE	MANUFACTURERS	NOTES
EF-1,2,3,4,5,6	SINGLE RESTROOM	CABINET	75	.25	70 W	900	DIRECT	0.4	0.17	115/1ø/60	GREENHECK SPA-110 OR APPROVED EQUAL	1,2,4,5
EF-7,8	WAREHOUSE	WALL PROP	5,850	.25	1/2 HP	670	BELT	14.6	1.1	480/3ø/60	GREENHECK SBE-1H30 OR APPROVED EQUAL	3,4
1. INTERLOCK EXHAUST FAN WITH LIGHT SWITCH TO WHERE FAN IS ON WHEN LIGHT SWITCH IS TURNED ON. 2. FAN SHALL COME WITH GRAVITY TYPE BACKDRAFT DAMPER. 3. FAN SHALL BE PROVIDED W/ PUSH BUTTON ON/OFF FOR MANUAL OPERATION OF FAN. PROVIDE STARTER WITH FAN. 4. FURNISH AND INSTALL THERMOSTAT, LOW VOLTAGE CONTROL WIRING AND CONDUIT, ETC. SO THAT FAN SHALL RUN WHEN TEMPERATURE EXCEEDS THE SET POINT TEMPERATURE OF 95°F. 5. CONTRACTOR TO PROVIDE A 120V/277V TRANSFORMER WITH FAN.												

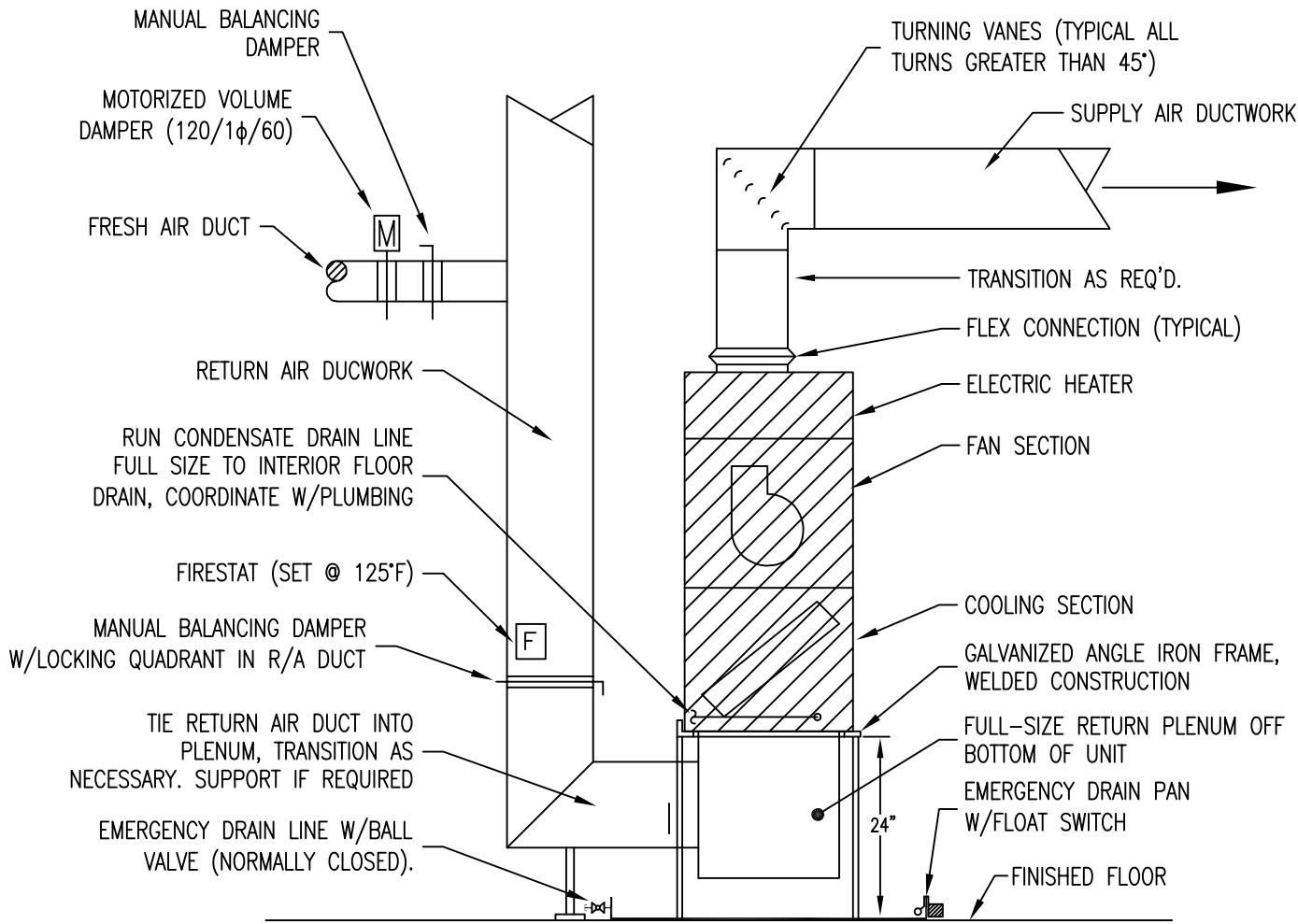
A

DIFFUSER SCHEDULE

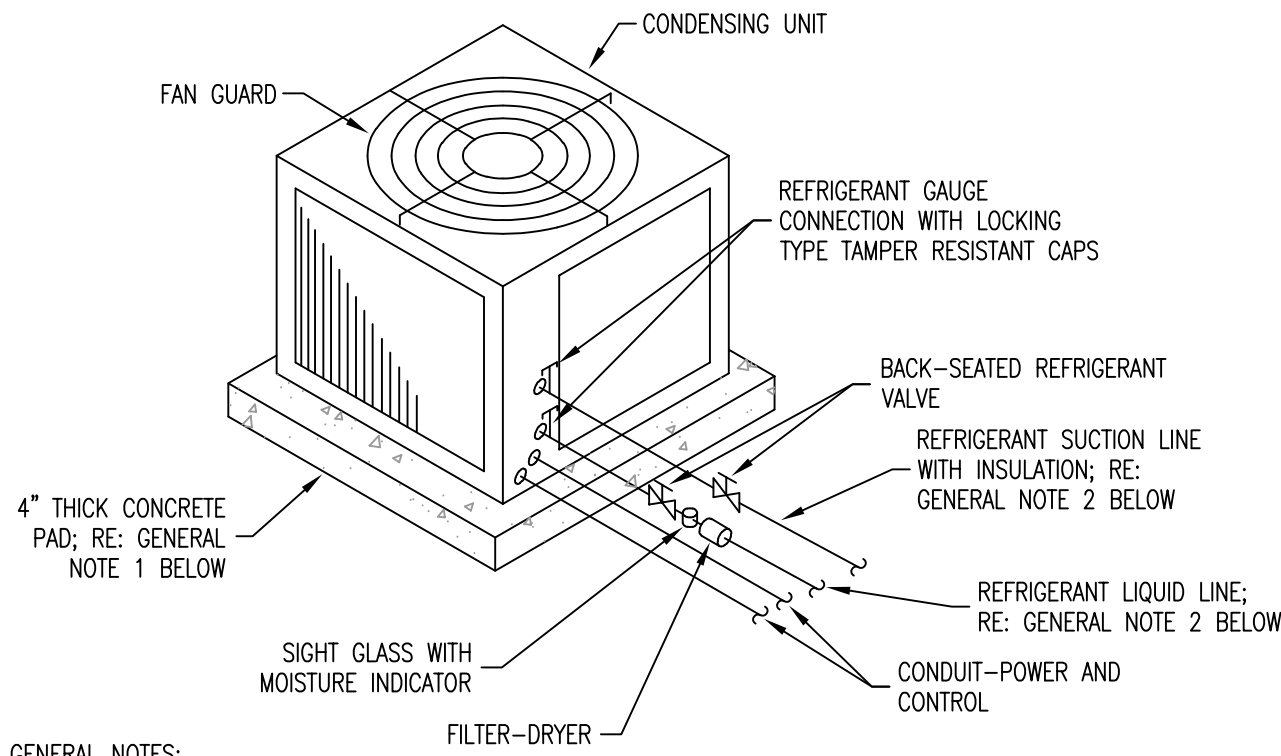
SYM.	CFM RANGE	FACE SIZE	NECK SIZE	MATERIAL	FINISH/COLOR	REMARKS
A1	0-120	12X12	6"ø	ALUMINUM	WHITE	TITUS TMSA-AA, PRICE ASCDA, SQUARE CEILING DIFF
A	0-120	24x24	6"ø	ALUMINUM	WHITE	TITUS TMSA-AA, PRICE ASCDA, SQUARE CEILING DIFF
B	120-230	24x24	8"ø	ALUMINUM	WHITE	TITUS TMSA-AA, PRICE ASCDA, SQUARE CEILING DIFF
C	230-320	24x24	10"ø	ALUMINUM	WHITE	TITUS TMSA-AA, PRICE ASCDA, SQUARE CEILING DIFF
D	325-600	24X24	12"ø	ALUMINUM	WHITE	TITUS TDC, PRICE APPROVED EQUAL, SQUARE CEILING DIFF
RA	0-2160	24"x24"	12"x12"	ALUMINUM	WHITE	TITUS 50F, PRICE APPROVED EQUAL, EGGRATE GRILLE W/ 1"x8"x1" CORE
NOTES: 1. CONTRACTOR SHALL COORDINATE LOCATION OF DIFF W/ ARCHITECTURAL REFLECTIVE CEILING PLAN TO AVOID ANY CONFLICTS W/ LIGHTS, AUDIO EQUIPMENT AND OTHER CEILING APERTURANCE. 2. CONTRACTOR TO PROVIDE ALL TRANSITIONS NECESSARY TO ACCOMMODATE GRILLE CONNECTION. 3. COLOR OF DIFFUSER BY ARCHITECT.						

GAS FIRED UNIT HEATER SCHEDULE

MARK	GAS HEAT			FAN		ELECTRIC SERVICE			ACCEPTABLE MANUFACTURERS	NOTES	
	MAX INPUT	MIN OUTPUT	MIN AIR TEMP RISE	MIN AIR FLOW	MOTOR H.P.	FLUE DIA.	VOLTS	PH			FREQ
UH-1,2	75000 BTU/H	60000 BTU/H	80°F	1160 CFM	0.08 HP	4"	120 V	1	60 HZ	MODINE HD SERIES; REZOR UDAP SERIES; TRANE GTND SERIES	1
NOTES:											
1. UNIT HEATER TO BE FURNISHED AND INSTALLED WITH TWO STAGE ROOM THERMOSTAT WITH 40°F – 90°F TEMPERATURE RANGE, 1.0A @ 24VAC AND HEAT ANTICIPATOR.											



1 | DETAIL-VERTICAL AIR HANDLING UNIT  
SCALE: N.T.S.



- GENERAL NOTES:
- CONDENSING UNIT SHALL BE MOUNTED ON 4" THICK CONCRETE PAD TO EXTEND A MINIMUM OF 6" ALL AROUND UNIT. CONDENSING UNITS SHALL BE INSTALLED WITH A MINIMUM OF 3'-0" CLEARANCE BETWEEN UNITS.
  - ALL REFRIGERANT LINES MUST BE SIZED IN STRICT ACCORDANCE WITH MANUFACTURER'S SPECIFICATIONS. REFRIGERANT LINES SHALL BE ROUTED UP EXTERIOR WALL & EXPOSED THROUGH ATTIC OR CEILING SPACE TO RESPECTIVE AIR HANDLING UNIT. SEAL WALL PENETRATION WATER TIGHT.

2 | DETAIL-AIR COOLED DX CONDENSING UNIT  
SCALE: N.T.S.

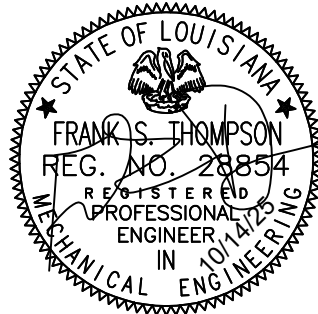


THOMPSON LUKE & ASSOCIATES, L.L.C.  
10705 RIEGER RD., STE 101  
BATON ROUGE, LA 70809  
(225)293-9474; TLA PROJECT #25-035  
Frank Saville Thompson - License No. 28854  
Landon David Burns - License No. 46484

Consultant

Design Phase Acceptance

Permit/Seal



Client/Project  
CITY OF NATCHITOCHES

Project No.: 222706059

File Name: 25-035 MECH - USE THIS ONE

Scale:

2025.09.26  
Dwn. Degn. Chkd. YYYY.MM.DD

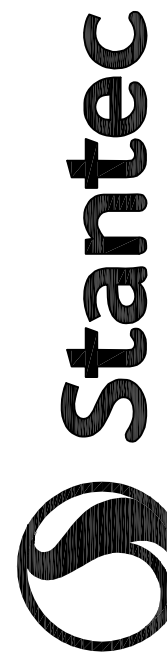
Title

MECHANICAL  
SCHEDULES

Revision: Sheet: 2 of 3

Drawing No.

M200



Stantec (Formerly Bradley-Blevins & Associates)  
1200 Brickyard Lane, Suite 400  
Baton Rouge, LA 70802  
Tel: 225-765-7400  
www.stantec.com

Copyright Reserved

The Contractor shall verify and be responsible for all dimensions. DO NOT scale the drawings. The Contractor shall verify and be responsible for all dimensions. DO NOT scale the drawings. The Contractor shall verify and be responsible for all dimensions. DO NOT scale the drawings.